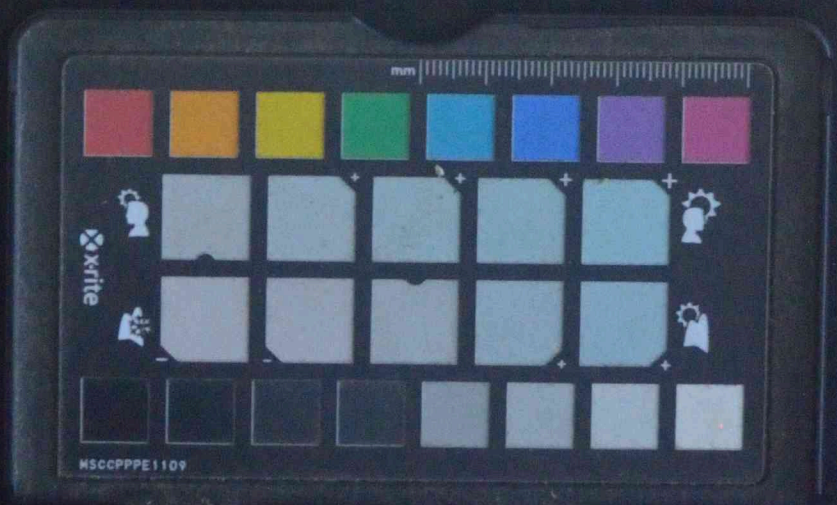
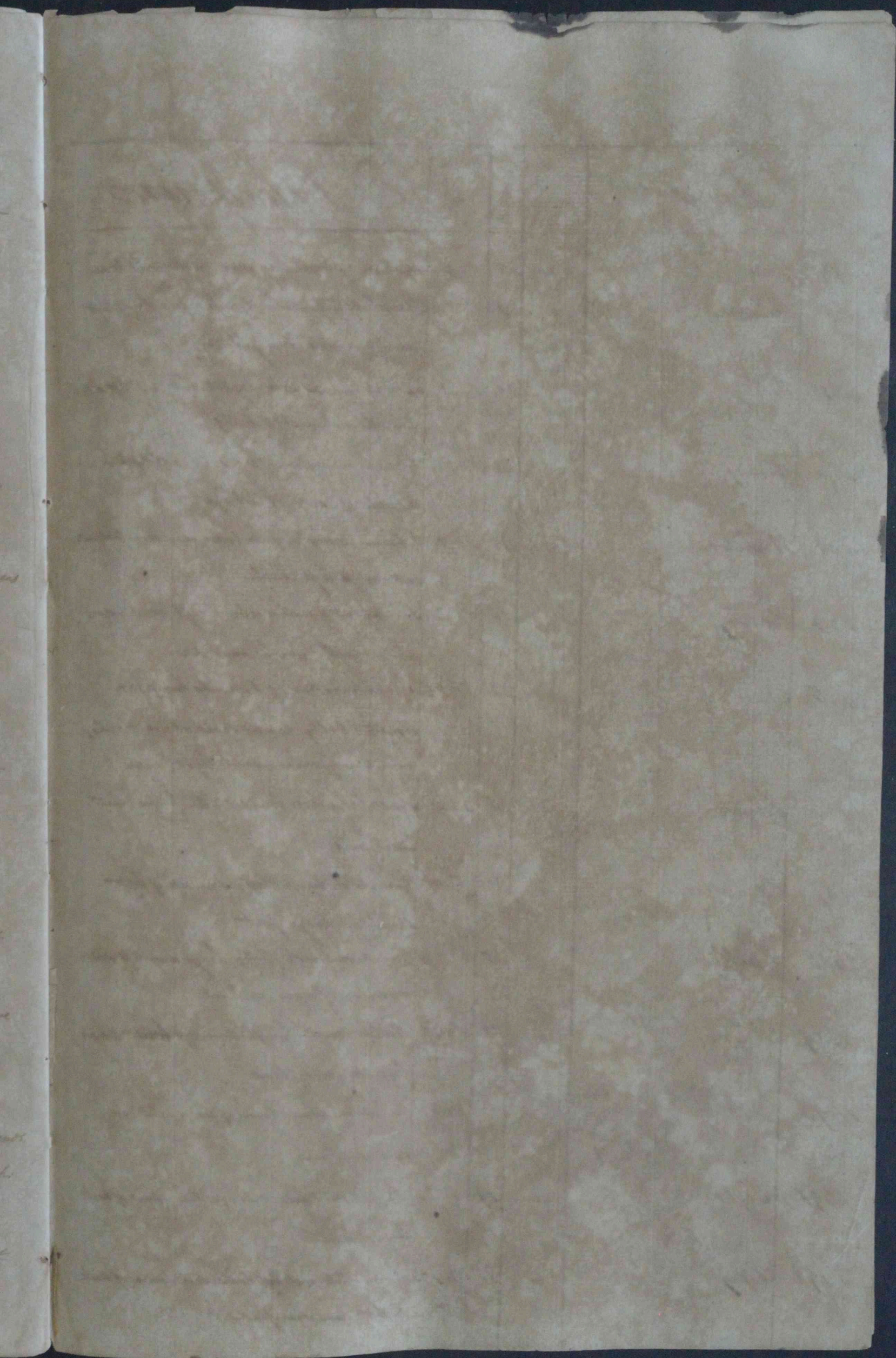


No.	Name	Description
1465		...
1466	Lape	...
1467	Barques	...
1468	Dua	...
1469	Mauwater	...
1470
1471	Peta	...
1472
1473
1474
1475
1476
1477
1478
1479
1480



No.	Names	Age	Sex	Race	Description
1465	Seni	20	M	S	Scar on chin but on forehead not on nose under left shoulder.
1466	Laps	26	F	S	Scar on belly but not on forehead left of right shoulder.
1467	Gadqun	20	M	S	Very large scar on right side near ear above left ear.
1468	Qua	19	M	S	Scar outside of left elbow large scar back of shoulder scar on breast and fingers.
1469	Mawallat	25	M	S	Number of scars round breast: has had five fingers and thumb breast belly scarified.
1470	Amanga	22	M	S	Small scar left side small scar part of right side back.
1471	Bala	25	M	S	Scar on breast scar on right side back.
1472	Sapura	65	M	S	Large scar on right shoulder scar on right breast scarified. Scar on breast.
1473	Bala	24	M	S	Scar on forehead scar on breast scar on fingers of left hand.
1474	Jawad	20	M	S	Scar on neck top of left foot scar on top of left hand breast and back.
1475	Braho	24	M	S	Scar on hand scar on breast scar on left breast scar on breast.
1476	Ba	20	M	S	Scar on neck top of right shoulder Scar on forehead scar on belly and breast.
1477	Amra	21	M	S	Scar on forehead scar on forehead scar on back scar on belly scar on breast.
1478	Amfama	20	M	S	Scar on cheek right ear scar on left side scar on right side back.



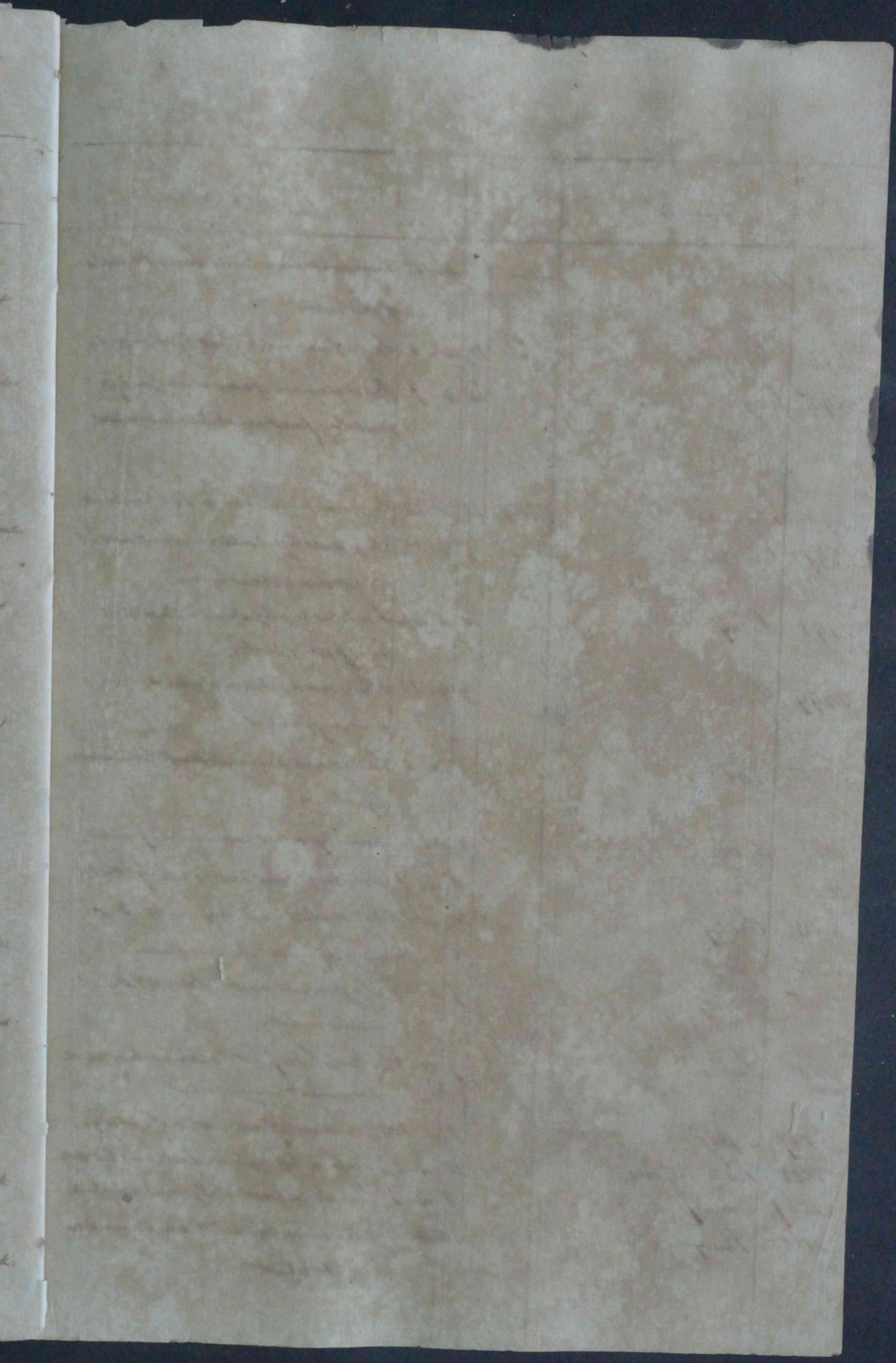


No.	Locality	Description
1474	Yuba
1475	Yuba
1476	Yuba
1477	Yuba
1478	Yuba
1479	Yuba
1480	Yuba
1481	Yuba
1482	Yuba
1483	Yuba
1484	Yuba
1485	Yuba
1486	Yuba
1487	Yuba
1488	Yuba
1489	Yuba
1490	Yuba
1491	Yuba
1492	Yuba



N ^o	Names	Age	Descriptions
1474	Gela	12	Small mark on upper lip near right eye
1480	Budras	14	Two slight spots on forehead, one on right side of nose, one on right cheek
1481	Oba	10	Several marks above right eye, 2 or 3 on forehead on breast & belly
1482	Agway	22	Mark on breast, one on right side, one on left side of eye
1483	Monina	18	3 or 4 spots on side of face, one on forehead, one on left cheek
1484	Carley	16	Two spots on forehead, one on left side, one on right side of nose
1485	Jaco	12	Several marks on forehead, one on breast, one on belly, one on side of face, one on forehead, one on left cheek
1486	Suna	15	Spot between breast & left shoulder
1487	Bala	16	Mark on forehead, one on top of left shoulder, large feet
1488	Guillea	15	Mark on forehead, one on left side, one on side of face
1489	Nora	23	Small mark, large on left breast, one on left shoulder blade
1490	Lara	22	Mark on forehead, one on side of face, one on breast, one on belly
1491	Boyla	14	Mark on forehead, 2 large on part of back, large marks
1492	Pofy	15	Large white spot on forehead, one on side of back, right arm ornate





No.	Name	Sex	Age	Remarks
1493	Anna	Female	10	Large bump back of right hand. No marks on the breast.
1496	Charlotte	Female	10	Large front neck, front of face & ears.
1495	Jenny	Female	14	Large amount of hair over face, especially front, much between divided.
1496	Charlotte	Female	10	Large bump back of right hand. No marks on the breast.
1497	Charlotte	Female	10	Large bump back of right hand. No marks on the breast.
1498	Jenny	Female	14	Large amount of hair over face, especially front, much between divided.
1499	Jenny	Female	14	Large amount of hair over face, especially front, much between divided.
1500	Anna	Female	10	Large bump back of right hand. No marks on the breast.
1501	Jenny	Female	14	Large amount of hair over face, especially front, much between divided.
1502	Anna	Female	10	Large bump back of right hand. No marks on the breast.
1503	Anna	Female	10	Large bump back of right hand. No marks on the breast.
1504	Jenny	Female	14	Large amount of hair over face, especially front, much between divided.
1505	Jenny	Female	14	Large amount of hair over face, especially front, much between divided.
1506	Anna	Female	10	Large bump back of right hand. No marks on the breast.
1507	Jenny	Female	14	Large amount of hair over face, especially front, much between divided.
1508	Charlotte	Female	10	Large bump back of right hand. No marks on the breast.
1509	Anna	Female	10	Large bump back of right hand. No marks on the breast.
1510	Jenny	Female	14	Large amount of hair over face, especially front, much between divided.



N ^o	Names	Age	Sex	Description
1493	Suzie	Man	15	4-10-18 Large bump back of right hand. No nipples to the breast.
1494	Mawiloo	"	11	4-8 Large faint mark front left shoulder.
1495	Serry	"	14	4-7 Great number of scars about front left wrist. Long faint mark between shoulders.
1496	Bansua	13	4-3-2 Large scar below navel. Scar on breast.	
1497	Bandaroo	"	4-3-2	Large scar left shoulder blade. Scar above left ear. Scar above eye. Scar below left eye.
1498	Soyoy	"	10	4-4-2 Scar below front left shoulder blade. Scar lower part of back.
1499	Grony	"	9	4-2-2 White mark between shoulders. Small dent on forehead.
1500	Kai	"	7	4-2 Scar between shoulder. Small lump outside left elbow.
1501	Sepu	"	8	3-10 Scar left side of neck. Mark on forehead.
1502	Nacoo	"	9	4-1 Long long faint scar inside right calf.
1503	Cauly	"	10	4-1-2 Small white mark inside right elbow.
1504	Soyoy	"	8	4-10 Large scar right shoulder blade.
1505	Soyoy	"	7	4-2-2 Large marks about right breast. Several marks on belly.
1506	Sakoo	"	4	4-0-2 Black line front of back. Mark on mouth. Prominent upper teeth.
1507	Soyoy	"	8	3-10-2 Scar on left shoulder. Scar on belly.
1508	Haitanjour	"	10	4-5-2 Scar on left eyebrow. Small scar left side.
1509	Cauly	"	8	4-1 Scar on breast. Whelly. Mark on forehead.
1510	Puay	"	10	4-2 Scar above left wrist. Small mark on right breast.



1064
31

1495



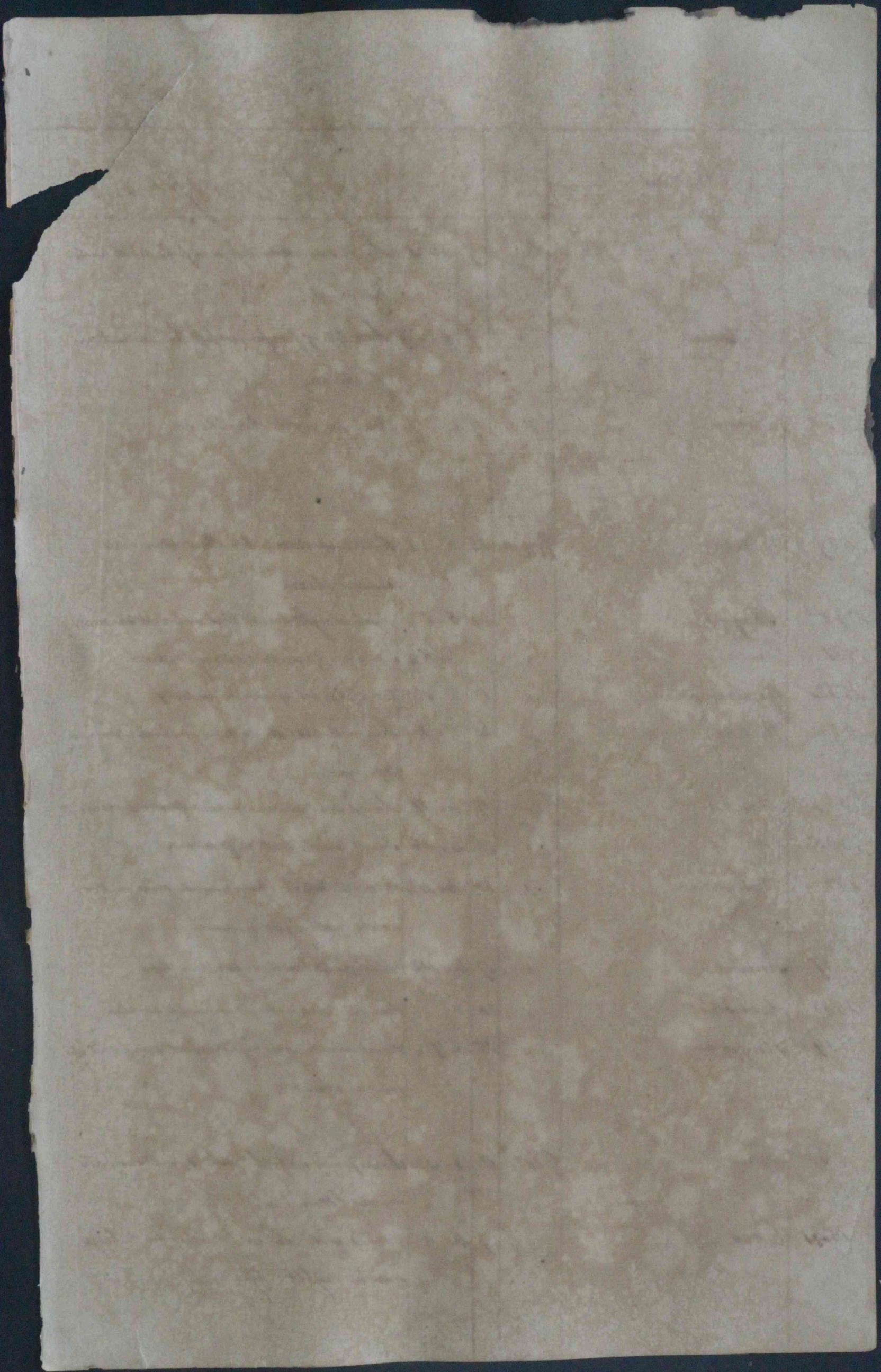
No.	Sex	Age	Measure	Description
1511	♂	1	14.5	longer than wide with long narrow aperture
1512	♂	1	14.5	longer than wide with long narrow aperture
1515	♂	1	14.5	longer than wide with long narrow aperture
1516	♂	1	14.5	longer than wide with long narrow aperture
1517	♂	1	14.5	longer than wide with long narrow aperture
1518	♂	1	14.5	longer than wide with long narrow aperture
1519	♂	1	14.5	longer than wide with long narrow aperture
1520	♂	1	14.5	longer than wide with long narrow aperture
1521	♂	1	14.5	longer than wide with long narrow aperture
1522	♂	1	14.5	longer than wide with long narrow aperture
1523	♂	1	14.5	longer than wide with long narrow aperture
1524	♂	1	14.5	longer than wide with long narrow aperture
1525	♂	1	14.5	longer than wide with long narrow aperture

[Faint handwritten notes on the right page, mostly illegible due to fading and bleed-through.]



No.	Name	Sex	Age	Height	Weight	Description
1511	Lafay	Boy	9	4.4	4	Large scar below neck-rash. large & small dent on left elbow.
1512	Yacoo	"	10	4.14	4	Wet right side mouth small part mark on right breast.
1513	Lafay	"	10	4.23	3	2 round marks behind left thigh faint dent on forehead.
1514	Gango	"	11	4.3	4	Yellowish complexion; dent inside right & left outside left eye.
1515	Pomeroon	"	9	4.12	4	Scars on left eye; scars on belly; very much scorched.
1516	Lafay	"	9	4.1	4	Faint round mark back of right arm above elbow marks inside left ankle.
1517	Fouray	"	8	3.11 1/2	4	Scar right side back.
1518	Souang	"	10	4.5	4	Round mark left side hand long scar around at front of left thigh.
1519	Goo	"	9	4.22	4	Round scar on right arm below elbow; scar on under lip.
1520	Lang	"	9	4.3 1/2	4	Scar close to pit of stomach; several lumps on left wrist.
1521	Dombro	"	10	4.4 1/2	4	Scar above right wrist; dent a little below left eye.
1522	Hera	"	10	4.5	4	Scar thumb left side forehead; scar on forehead; scar on right eye.
1523	Mawra	"	8	4.1 1/2	4	Long scar on right shoulder long scar top of right foot.
1524	Pisa	"	10	4.42	4	Long round mark on belly Number of dark left shoulder blade.
1525	Lafay	"	9	3.11 1/2	4	Faint marks between breasts several on right side belly.





No.	Name	Sex	Age	Part	Remarks
1527	Java	♂	5-12	Left eye	Large amount of pus in eye by side
1528	Java	♂	8-12	Left eye	Large amount of pus in eye by side
1529	Java	♂	10-12	Left eye	Large amount of pus in eye by side
1530	Java	♂	10-12	Left eye	Large amount of pus in eye by side
1531	Java	♂	10-12	Left eye	Large amount of pus in eye by side
1532	Java	♂	10-12	Left eye	Large amount of pus in eye by side
1533	Java	♂	10-12	Left eye	Large amount of pus in eye by side
1534	Java	♂	10-12	Left eye	Large amount of pus in eye by side
1535	Java	♂	10-12	Left eye	Large amount of pus in eye by side
1536	Java	♂	10-12	Left eye	Large amount of pus in eye by side
1537	Java	♂	10-12	Left eye	Large amount of pus in eye by side
1538	Java	♂	10-12	Left eye	Large amount of pus in eye by side
1539	Java	♂	10-12	Left eye	Large amount of pus in eye by side
1540	Java	♂	10-12	Left eye	Large amount of pus in eye by side

1541

1542

1543

1544

1545

1546

1547

1548

1549

1550

1551

1552

1553

1554

1555

1556

1557

1558

1559

1560

1561

1562

1563

1564

1565

1566

1567

1568

1569

1570

1571

1572

1573

1574

1575

1576

1577

1578

1579

1580

1581

1582

1583

1584

1585

1586

1587

1588

1589

1590

1591

1592

1593

1594

1595

1596

1597

1598

1599

1600



No.	Name	Sex	Age	Height	Weight	Description
1526	Coco	Boy	4	5		Large scar under left arm pit. mark on left cheek.
1527	Mijana		9	4	13	Scar top of forefinger left hand. scar on forefinger.
1528	Nacari		9			Scar on right shoulder.
1529	Sattara	Woman	24	5	13	Small bumps close to left elbow. Scar right shoulder blade.
1530	Ghufua		24	5	13	Scar on right breast. black mole right ear nose.
1531	Loon		17	4	13	Scar under left arm. Scar right elbow.
1532	Gubimara		17	5	13	Scar large scar on ear lobe.
1533	Madang		25	5	1	Scar on left breast. denture forehead. scar under left eye.
1534	Mandit		17	4	11	Large scar under left ear. denture forehead.
1535	Cai		16	4	16	Small mark under left elbow.
1536	Kungara		20	4	11 1/2	Scar on forehead. four round scars on left wrist. mole right eye corner.
1537	Senara		17	4	10 1/2	2 bumps behind left ear. thin lips.
1538	Masgar		20	5		Scar on left ankle. Scar on right ankle.
1539	Pingwary		15	4	7 1/4	Scar on neck near right elbow. Scar front of left ankle.
1540	Suro	Girl	11	4	13	Scar front of right ear. small marks on right ankle.
1541	Coco		9	4	6	3 scars right side of forehead large scar on right calf.



1095

33

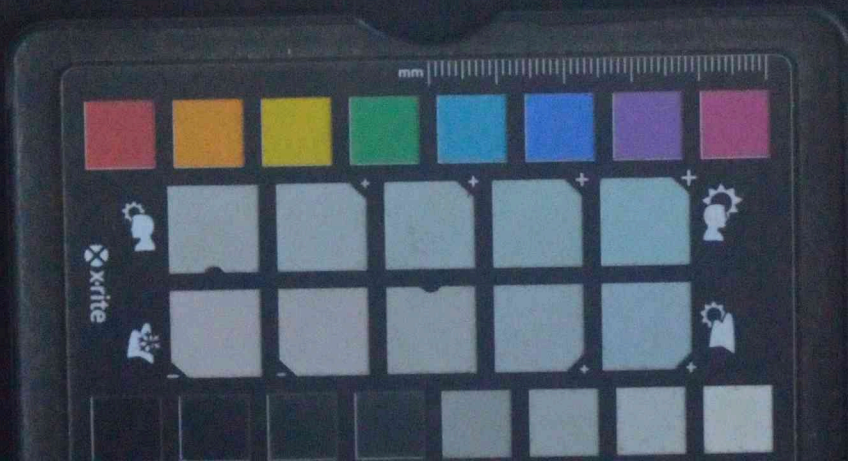
1528

11

87

12

51



No.	Name	Sex	Age	Measurements	Description
1542	John	♂	10	11	Black - with brownish cast on sides of neck
1543	Henry	♂	11	12	Black - with brownish cast on sides of neck
1544	Henry	♂	12	13	Black - with brownish cast on sides of neck
1545	Thomas	♂	13	14	Black - with brownish cast on sides of neck
1546	John	♂	14	15	Black - with brownish cast on sides of neck
1547	Henry	♂	15	16	Black - with brownish cast on sides of neck
1548	Thomas	♂	16	17	Black - with brownish cast on sides of neck
1549	John	♂	17	18	Black - with brownish cast on sides of neck
1550	Henry	♂	18	19	Black - with brownish cast on sides of neck
1551	Thomas	♂	19	20	Black - with brownish cast on sides of neck



No	Name	Sex	Age	Description
1542	Cora	Girl	10	Small mark inside mouth ear outside left calf.
1543	Jenny	.	10	4. 8 Small ear right side back large d. on right foot.
1544	Birry	.	8	4. 7 1/2 Small ear above right throat large mark.
1545	Mafourar	.	8	4. 3 3/4 Number of rough marks on ear chest yellowish complexion.
1546	Fow	.	8	4. 3 Line above right elbow. d. left chest.
1547	Mary	.	8	4. 2 Small mark on inside of left side back.
1548	Mangai	.	9	4. 7 Round mark below pit of shoulder dent outside left knee.
1549	Cora	.	9	4. 5 1/2 Mark back of right ear below ear pit. d. on left chest.
1550	Mary	.	7	4. 1 1/2 Small ear on right shoulder. small d. inside left calf.
1551	Jenny	.	10	4. 7 1/2 Round mark outside left calf.



